

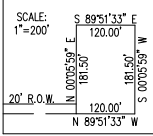
SECTIONS 22 TO 27 & 34 TO 36
T.8N., R.3E., S.L.B.&M.

IN WEBER COUNTY

SCALE 1" = 1200'

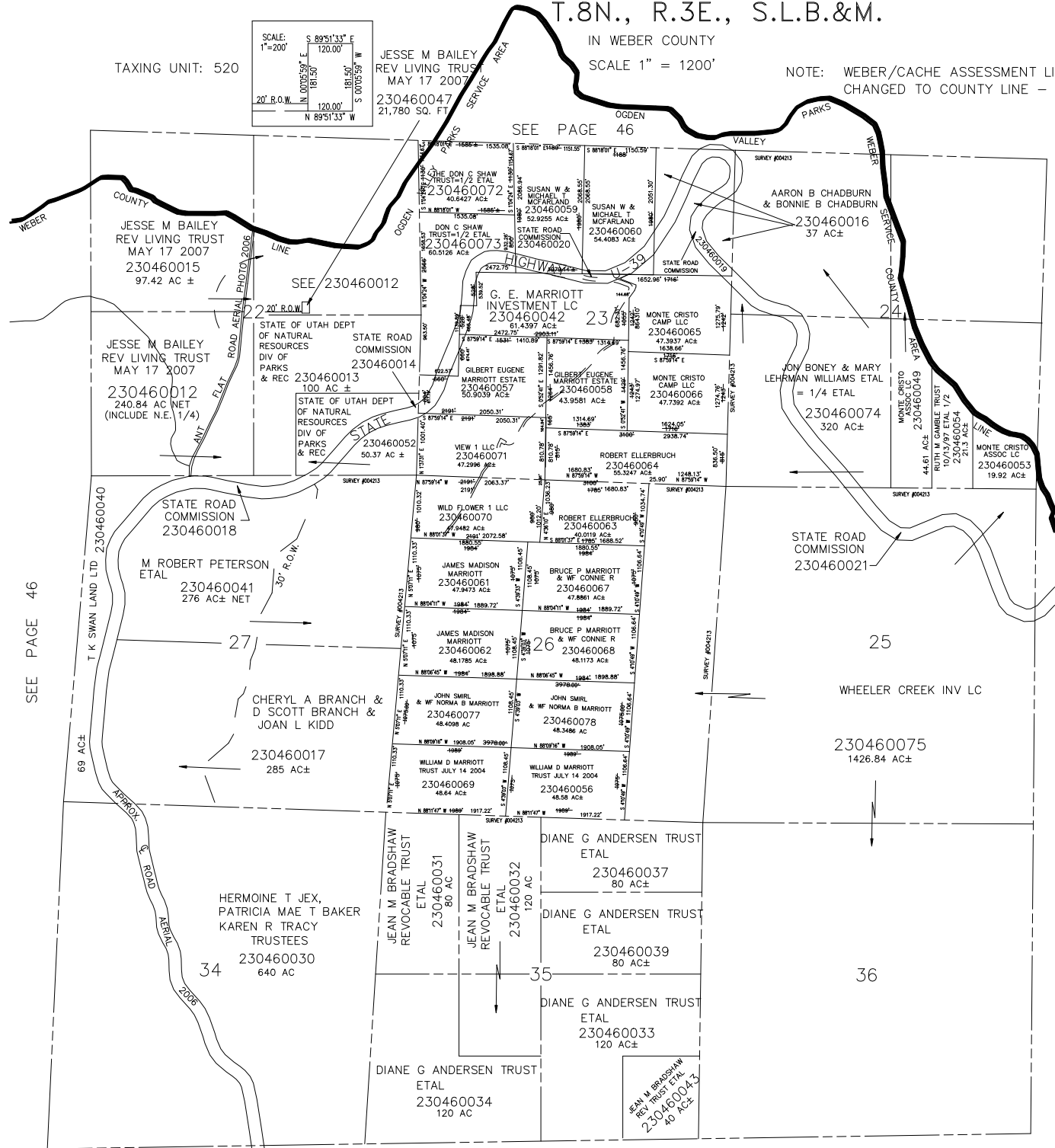
NOTE: WEBER/CACHE ASSESSMENT LINE
CHANGED TO COUNTY LINE - 1995

TAXING UNIT: 520



JESSE M BAILEY
REV LIVING TRUS
MAY 17 2007
230460047
21,780 SQ. FT

SEE PAGE 46



SEE PAGE 46

SEE PAGE 46-2

SEE PAGE 13